



Office of Historic Preservation or the National Register of Historic Places. Development or redevelopment of areas within San Pablo should be conscious of the potential of disturbing or destroying cultural resources.

GOAL ER 1

NATURAL RESOURCE PROTECTION

PRESERVE AND ENHANCE THE CITY'S EXISTING PHYSICAL ENVIRONMENTAL RESOURCES, INCLUDING ALL CREEKS, HILLSIDES, AIR QUALITY, GROUNDWATER, VEGETATION AND WILDLIFE, ENERGY AND HISTORICAL SITES.

This section addresses a broad range of natural resource related topics. Discussed here are city-wide resource issues, creeks, hillside areas, air quality, groundwater and water quality, vegetation and wildlife, energy and cultural historic.

CITY-WIDE RESOURCE ISSUES

Policy ER 1.1: Environmental Resource Education

A community-wide education program shall be developed to inform members of the community on the values of maintaining environmental resources. The environmental education program will provide opportunities to participate in specific local programs to preserve and protect the environment.

Action ER 1.A: Community Level Environmental Resource Information/Education:

The City should consider creating a multi-lingual public education program which includes the following Environmental Resource protection and conservation strategies:

- ▶ West Contra County School District

Education Programs;

- ▶ Recommended options for reducing water consumption, erosion hazards along the creeks and hillsides, methods to reduce potential for home and wild fires, and the location and access to local and regional parks and open space;
- ▶ Recycling locations, programs, and benefits in coordination with WCCIWMA;
- ▶ Automobile trip mitigation program opportunities;
- ▶ Air Quality Improvement Programs;
- ▶ Creek Preservation/dumping remediation reporting programs coordinated with NPDES (i.e. notification and rewards program);
- ▶ Energy Conservation techniques;
- ▶ Solid waste source reduction strategies;
- ▶ Encouragement of community ownership of the creeks as a valuable natural resource, and as a unique open space asset and potential open space corridor; and
- ▶ Relationship with and availability of the East Bay Regional Park District.

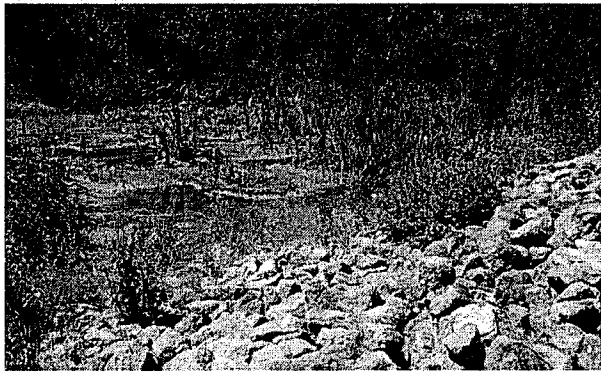
CREEKS

Policy ER 1.2: Creek Designation

Primary Creeks (Rheem, Wildcat and San Pablo) shall be treated as physical amenities to define neighborhoods and districts throughout the City.

**Policy ER 1.3:
Creek Maintenance, Management and Improvements**

The City shall pursue public and private partnerships in the maintenance, management and improvement of Creek areas towards enhancing community image.



Enhanced creek area along the west county bike trail system

**Policy ER 1.4:
Protection of Creeks Natural Character**

As a defining feature, the City shall encourage flood control improvements along appropriate Creek corridors which preserve the natural characteristics of the Creek. Such characteristics include trees and riparian vegetation and unchannelized banks wherever feasible.

**Policy ER 1.5:
Historic Habitat Recognition**

The City shall recognize, protect and encourage the linkage of Creeks to historic habitat values, both within the City and within up- and down-stream areas.

**Policy ER 1.6:
Multi-Use Creek Corridor Prioritization**

Support a multi-use concept for creek corridors that incorporates linear open space uses, neighborhood definition and riparian habitat protection, flood control, and recreation needs of the greater San Pablo Community. Evaluation and feasibility for future creek improvements shall be prioritized as follows: (1) Wildcat Creek,

(2) San Pablo Creek, and (3) Rheem Creek.

**Policy ER 1.7:
Groundwater Recharge**

Protect important groundwater recharge areas, particularly creeks and creek sides from encroachment of urban development.

**Policy ER 1.8:
New Development Along Creeks**

Through the CEQA process, the City shall consider the impacts of new development along the City's existing creek corridors in terms of protection to wetland and/or riparian resources, woodland and other sensitive features, and related water quality. Such consideration shall include coordination and appropriate permitting with the US Fish and Wildlife Service, California Department of Fish and Game, Regional Water Quality Control Board; opportunities to design buildings and building footprints so as to avoid impacts to wetland features, woodlands or other sensitive natural features; identification of construction measures to reduce impacts to creeks; and design of facilities to prevent degradation of riparian and wetland features from potential urban pollutants.

**Action ER 1.B:
Creek Improvement Partnerships**

The City will actively work with private property owners, East Bay Regional Parks District (EBRPD), US Army Corps of Engineers (COE), Department of Fish and Game (CDFG) and related agencies to establish a Creek Linkage and Improvement Program (CLIP). This program is intended to provide for pedestrian/bicycle access to the Creek corridors, while preserving the natural integrity of the area.

**Action ER 1.C:
Create a Creek Linkage and Improvement Program (CLIP):**

Subsequent to adoption of the General Plan, the City shall establish a Creek Linkage and Improvement Program (CLIP). The CLIP is intended to provide a strategic framework for the



acquisition of land and/or easements along the primary Creek corridors for a comprehensive trail and neighborhood park linkage program; for acquisition, restoration and maintenance.

- ▶ The CLIP shall identify and prioritize parcels along the creeks that:
 - are vacant and are at risk of being developed
 - are causing erosion control problems
 - are points for chronic dumping
 - are vacant and un-developable
 - or could provide the greatest opportunity to meet the goals of the CLIP, and the Parks and Recreation Master Plan. Open space properties shall be purchased as prioritized within the OSAEP.

▶ The CLIP shall include setback standards for buildings, fences, roads and activity areas; dedication requirements for trail right of way; guidelines for re-vegetation of native species; pollution control measures; and a detailed design package for signs, construction materials, lights, railings, bridges, furniture etc. All improvements shall be designed in a manner that allows maximum pedestrian access with minimum impact to the natural state of a creek. Creek improvements shall use natural materials and maximize native plantings;

▶ As part of the CLIP or as separate design guidelines, the City shall adopt policies to insure appropriate development

within the Creek corridors, which will consider such items as compatibility of construction near creeks in terms of scale, setback, orientation, access, uses and character;

- ▶ The CLIP shall identify where there are possibilities to have connecting foot trails along the creeks and where there are opportunities to purchase properties for creekside mini-parks;
- ▶ The CLIP will work with property owners along the creek and the Police Department to develop directions for safety and surveillance along the creeks;
- ▶ As a component of the CLIP, develop a coordinated creek code-enforcement program that provides opportunities for community involvement in reporting code violations and maximizes the penalty for such violations. The program shall include a reporting hotline, warning signs at chronic dumping points, and coordination between the Code Enforcement Department, Public Works, NPDES and the Police Department.

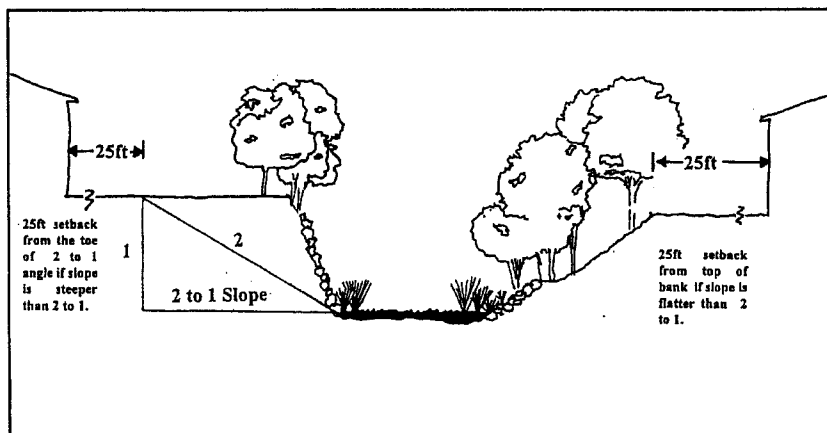


Figure 4.3
Recommended creek setbacks

Action ER 1.D:**Urban Design**

The City shall include within its urban design program a landscaping, roadway improvement and signage program that enhances the recognition of creeks at intersections of pedestrian and vehicle crossings.

Action ER 1.E:**Protection of Natural Features**

Flood control improvements within a Creek corridor shall be implemented so that the channel and corridor are returned to their natural state where possible.

HILLSIDE AREAS**Policy ER 1.9:****Hillsides As a Resource**

The City will consider hillside areas as a unique visual and topographic feature, as well as a defined neighborhood area and viewshed opportunity both to and from the city.

Policy ER 1.10:**Hillside Character Protection**

The City will strive to guide and enhance hillside development to preserve the existing semi-rural, open and quiet character of hillside neighborhoods.

Policy ER 1.11:**Regional Park Gateway**

The City recognizes the importance of Alvarado Park (located just outside the city limits) as a gateway to Wildcat Canyon Regional Park and its resource as a multi-regional open space network. The City shall develop programs to encourage a stronger visual, physical and social relationship to this important resource.

Action ER 1.F:**Hillside Design Guidelines**

Develop Hillside Design Guidelines specifically for identified hillside areas, including structure siting criteria, height restrictions, minimum lot sizes, grading criteria, and engineering standards.

A survey shall be conducted which identifies (1) those hillside parcels at high risk of slope instability or other geotechnical problems; (2) existing unimproved open space resources; and (3) existing and potential vehicle and pedestrian access points to Alvarado Park. These lands will be inventoried and prioritized as key pieces to the hillside open space network. The City shall seek private and public resources towards the purchase of lands for improvement as individual neighborhood parks or as part of a larger linear open space network along Wildcat Creek.

Action ER 1.G:**Viewshed Preservation and Enhancement**

Identify and map prominent viewsheds, vistas and view corridors. Designate these hillside amenities as parcels to be protected through a planting plan, construction design guidelines or a hillside preservation ordinance.

AIR QUALITY**Policy ER 1.12:****State and Federal Compliance**

The City shall strive to meet all State and Federal ambient air quality standards through General Plan land uses and implementation actions.

Policy ER 1.13:**Air Quality Improvements**

Encourage non-polluting transportation modes and opportunities (i.e. pedestrian, bike, carpooling opportunities and public transit improvements) as specified in the Circulation Element.

Policy ER 1.14:**Support WCCTAC Programs**

The City will continue to encourage and support local and regional vehicle trip reduction programs as administered through the West Contra Costa County Transportation Advisory Committee.